

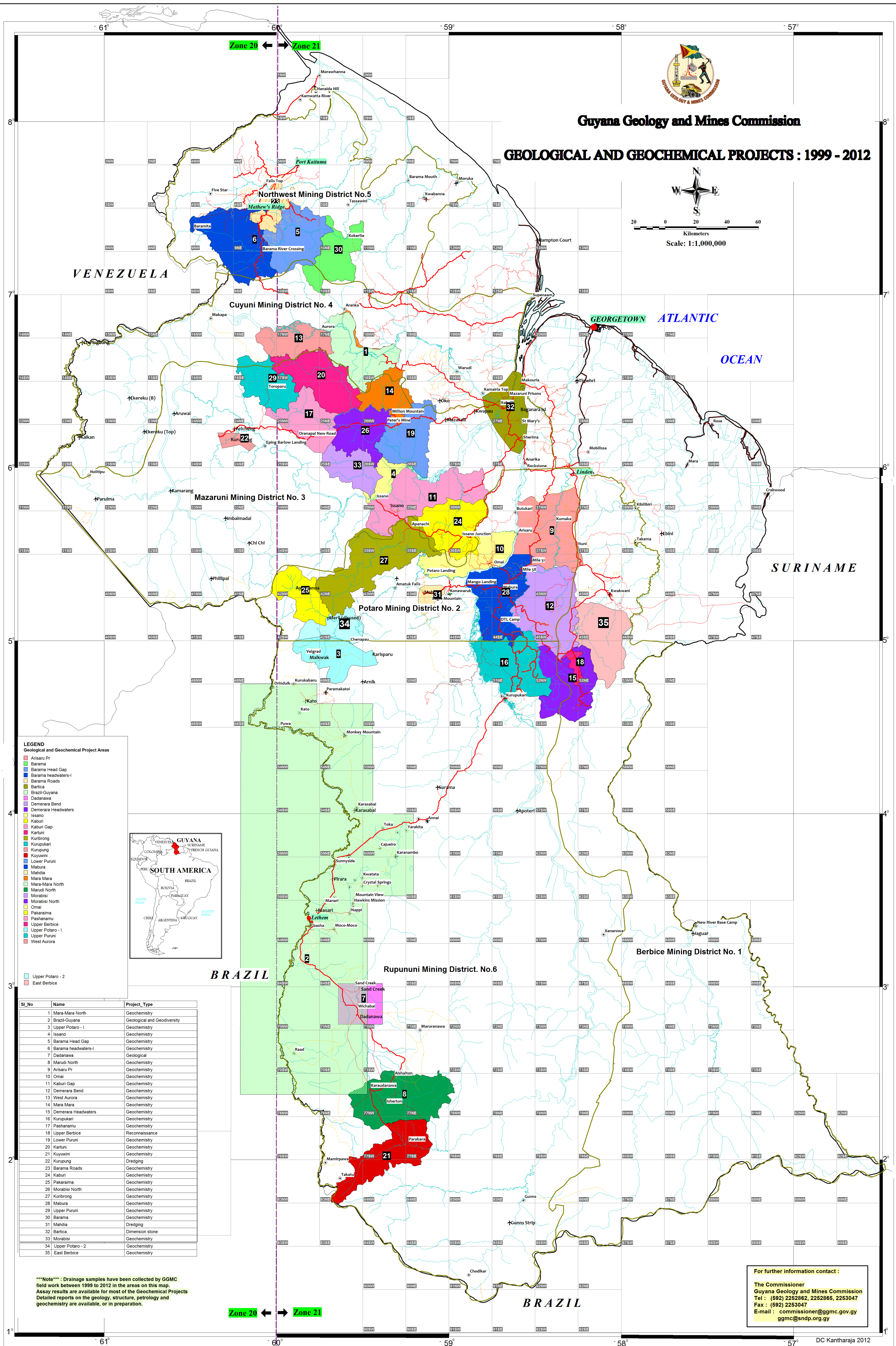


Guyana Geology and Mines Commission

GEOLOGICAL AND GEOCHEMICAL PROJECTS : 1999 - 2012



Scale: 1:1,000,000



LEGEND

Geological and Geochemical Project Areas

- 1 Arisaruru Pt
- 2 Barama
- 3 Barama Head Gap
- 4 Barama headwaters-I
- 5 Barama Roads
- 6 Bartica
- 7 Brazil-Guyana
- 8 Dadanawa
- 9 Demerara Bend
- 10 Demerara Headwaters
- 11 Kaburi
- 12 Kaburi Gap
- 13 Kartuni
- 14 Kurubong
- 15 Kurupukari
- 16 Kurupung
- 17 Kuyuwini
- 18 Lower Puruni
- 19 Mabura
- 20 Mahdia
- 21 Mara-Mara
- 22 Mara-Mara North
- 23 Marudi North
- 24 Morabisi
- 25 Morabisi North
- 26 Omali
- 27 Pakaraima
- 28 Pashanamu
- 29 Upper Berbice
- 30 Upper Potaro - I
- 31 Upper Puruni
- 32 West Aurora
- 33 Upper Potaro - 2
- 34 East Berbice



Sl. No	Name	Project Type
1	Mara-Mara North	Geochemistry
2	Brazil-Guyana	Geological and Geodiversity
3	Upper Potaro - I	Geochemistry
4	Issano	Geochemistry
5	Barama Head Gap	Geochemistry
6	Barama headwaters-I	Geochemistry
7	Dadanawa	Geological
8	Marudi North	Geochemistry
9	Arisaruru Pt	Geochemistry
10	Omali	Geochemistry
11	Kaburi Gap	Geochemistry
12	Demerara Bend	Geochemistry
13	West Aurora	Geochemistry
14	Mara Mara	Geochemistry
15	Demerara Headwaters	Geochemistry
16	Kurupukari	Geochemistry
17	Pashanamu	Geochemistry
18	Upper Berbice	Reconnaissance
19	Lower Puruni	Geochemistry
20	Kartuni	Geochemistry
21	Kuyuwini	Geochemistry
22	Kurupung	Dredging
23	Barama Roads	Geochemistry
24	Kaburi	Geochemistry
25	Pakaraima	Geochemistry
26	Morabisi North	Geochemistry
27	Kurubong	Geochemistry
28	Mabura	Geochemistry
29	Upper Puruni	Geochemistry
30	Barama	Geochemistry
31	Mahdia	Dredging
32	Bartica	Dimension stone
33	Morabisi	Geochemistry
34	Upper Potaro - 2	Geochemistry
35	East Berbice	Geochemistry

Note : Drainage samples have been collected by GGMC field work between 1999 to 2012 in the areas on this map. Assay results are available for most of the Geochemical Projects. Detailed reports on the geology, structure, petrology and geochemistry are available, or in preparation.

For further information contact :
 The Commissioner
 Guyana Geology and Mines Commission
 Tel : (592) 2252862, 2252865, 2253047
 Fax : (592) 2253047
 E-mail : commissioner@ggmc.gov.gy
 ggmc@sndp.org.gy