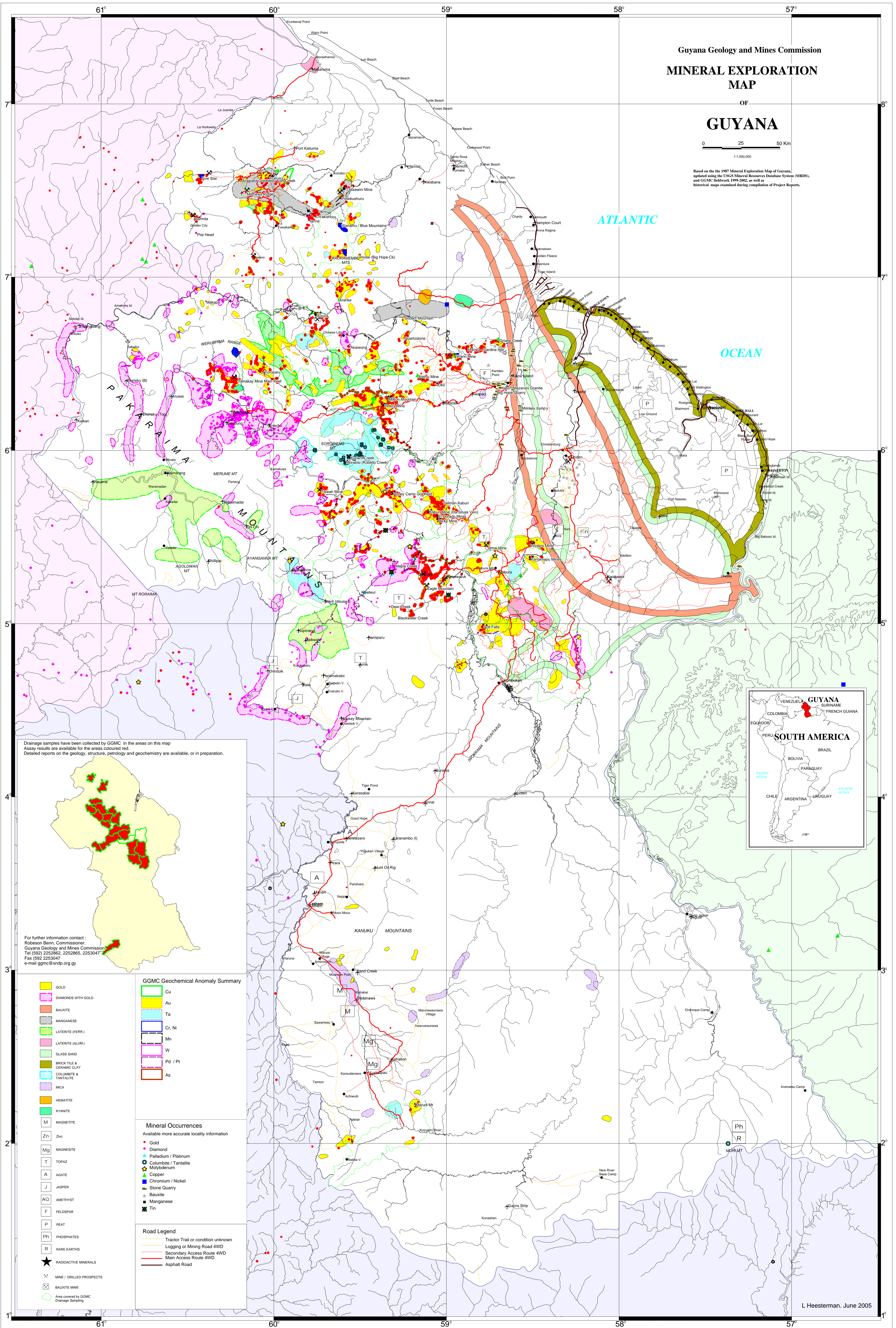


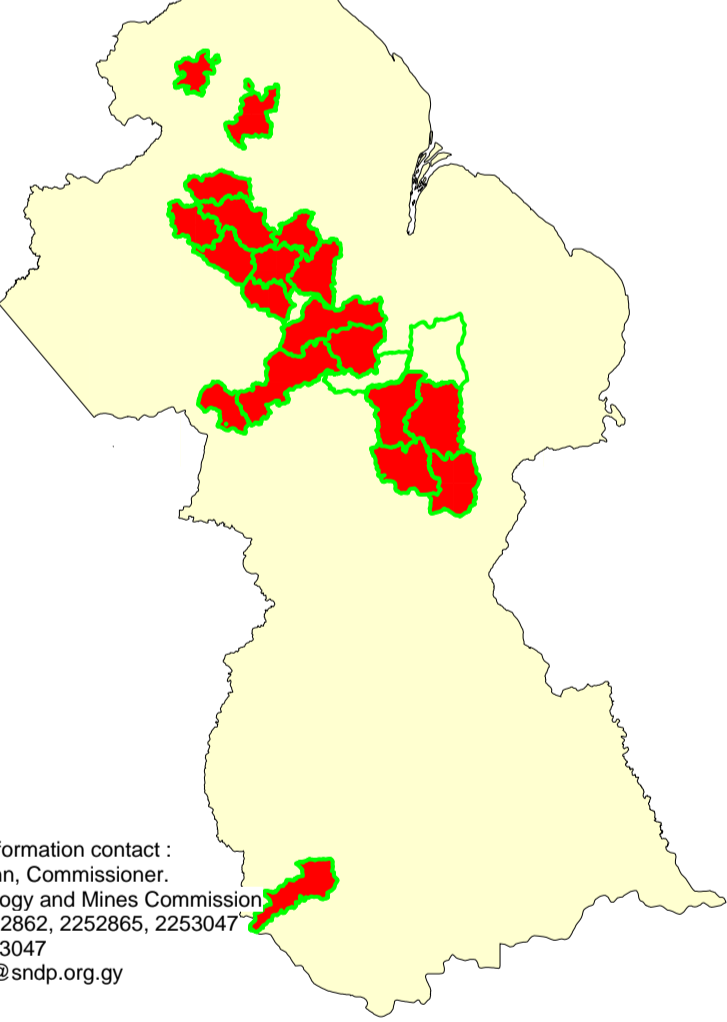
Guyana Geology and Mines Commission
**MINERAL EXPLORATION
 MAP**
 OF
GUYANA

0 25 50 Km
 1:1,000,000

Based on the 1987 Mineral Exploration Map of Guyana, updated using the USGS Mineral Resources Database System (MRDS), and GGMC fieldwork 1999-2002, as well as historical maps examined during compilation of Project Reports.



Drainage samples have been collected by GGMC in the areas on this map. Assay results are available for the areas coloured red. Detailed reports on the geology, structure, petrology and geochemistry are available, or in preparation.



For further information contact :
 Robeson Benn, Commissioner,
 Guyana Geology and Mines Commission
 Tel (592) 2252862, 2252865, 2253047
 Fax (592) 2252947
 e-mail ggmc@sndp.org.gy

GGMC Geochemical Anomaly Summary

Green	Cu
Yellow	Au
Cyan	Ta
Blue	Cr, Ni
White	Mn
Pink	W
Purple	Pd / Pt
Orange	As

Mineral Occurrences
 Available more accurate locality information

Red dot	Gold
Pink dot	Diamond
Blue star	Palladium / Platinum
Green star	Columbite / Tantalite
Yellow star	Molybdenum
Blue triangle	Copper
Green triangle	Chromium / Nickel
Black square	Stone Quarry
Black circle	Bauxite
Black diamond	Manganese
Black cross	Tin

Road Legend

Yellow line	Tractor Trail or condition unknown
Orange line	Logging or Mining Road 4WD
Red line	Secondary Access Road 4WD
Dark red line	Main Access Road 4WD
Black line	Asphalt Road

