

Guyana Geology and Mines Commission

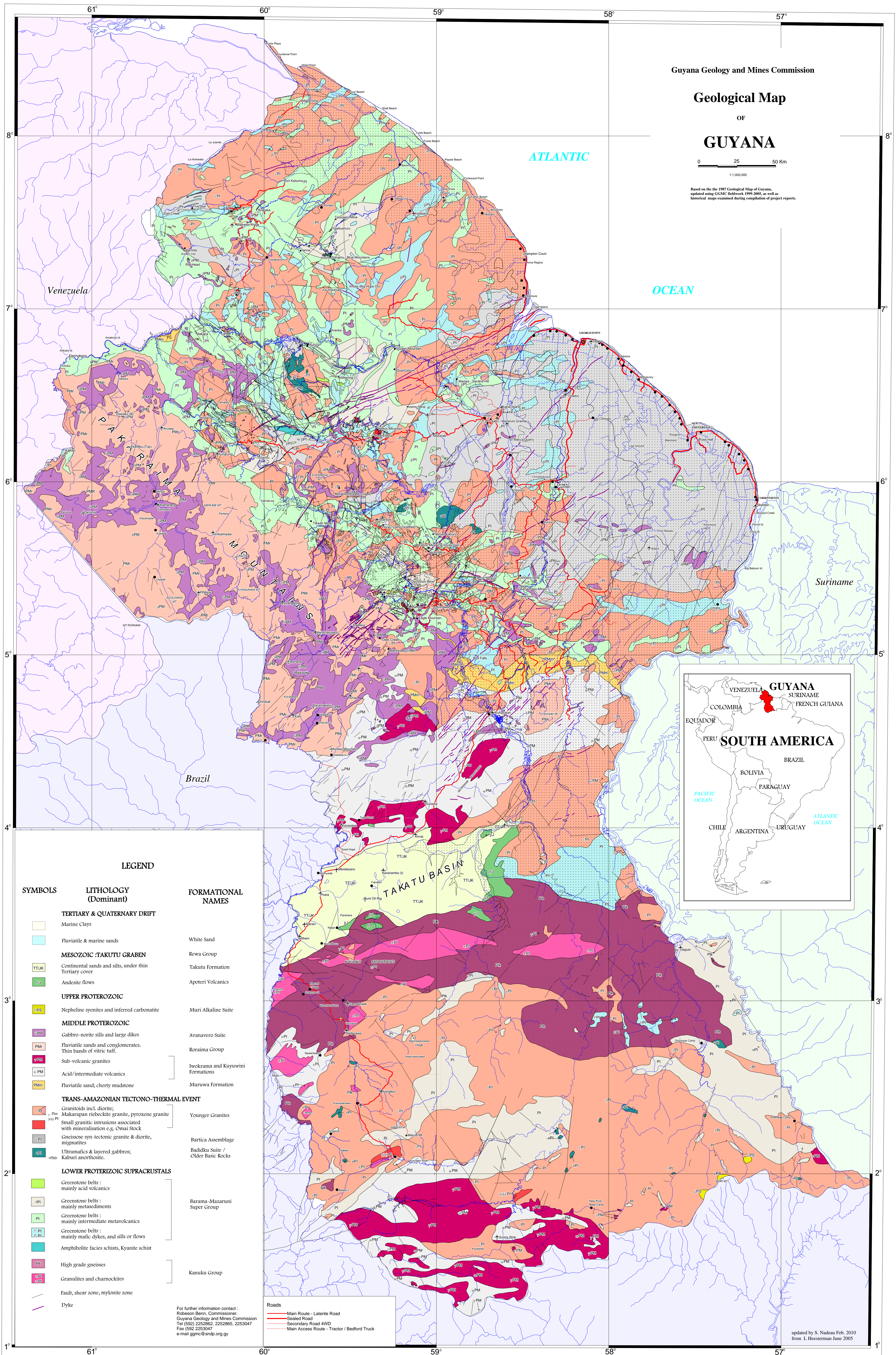
Geological Map

OF

GUYANA

0 25 50 Km
1:1,000,000

Based on the 1987 Geological Map of Guyana, updated using GGM/C data from 1999-2005, as well as historical maps examined during compilation of project reports.



LEGEND

SYMBOLS	LITHOLOGY (Dominant)	FORMATIONAL NAMES
TERTIARY & QUATERNARY DRIFT		
[Symbol]	Marine Clays	
[Symbol]	Fluviatile & marine sands	White Sand
MESOZOIC - TAKUTU GRABEN		
[Symbol]	Continental sands and silts, under thin Tertiary cover	Rewa Group
[Symbol]	Andesite flows	Takutu Formation
[Symbol]		Apoteri Volcanics
UPPER PROTEROZOIC		
[Symbol]	Nepheline syenites and inferred carbonatite	Muri Alkaline Suite
MIDDLE PROTEROZOIC		
[Symbol]	Gabbro-norite sills and large dikes	Avanavero Suite
[Symbol]	Fluviatile sands and conglomerates. Thin bands of vitric tuff.	Koraima Group
[Symbol]	Sub-volcanic granites	Iwokrama and Kayuwini Formations
[Symbol]	Acid/intermediate volcanics	
[Symbol]	Fluviatile sand; cherty mudstone	Muriwa Formation
TRANS-AMAZONIAN TECTONO-THERMAL EVENT		
[Symbol]	Granitoids incl. diorite; Makarapan riebeckite granite, pyroxene granite	Younger Granites
[Symbol]	Small granitic intrusions associated with mineralisation e.g. Ormai Stock	
[Symbol]	Gneissose syn-tectonic granite & diorite, migmatites	Bartica Assemblage
[Symbol]	Ultramafics & layered gabbros; Kaburi anorthosite.	Radikku Suite / Older Basic Rocks
LOWER PROTEROZOIC SUPRACRUSTALS		
[Symbol]	Greenstone belts: mainly acid volcanics	
[Symbol]	Greenstone belts: mainly metasediments	Barama-Mazaruni Super Group
[Symbol]	Greenstone belts: mainly intermediate metavolcanics	
[Symbol]	Greenstone belts: mainly mafic dykes, and sills or flows	
[Symbol]	Amphibolite facies schists, Kyanite schist	
[Symbol]	High grade gneisses	
[Symbol]	Granulites and charnockites	Kamuku Group
[Symbol]	Fault, shear zone, mylonite zone	
[Symbol]	Dyke	

For further information contact:
Robinson Benn, Commissioners,
Guyana Geology and Mines Commission
Tel: (592) 2252862; 2252865; 2252847
Fax: (592) 2252847
e-mail: ggmc@ndp.org.gy

Roads
Main Route - Latente Road
Sealed Road
Secondary Road 4WD
Main Access Route - Tractor / Bedford Truck

updated by S. Nadeau Feb. 2010
from L. Heesterman June 2005