

Photo 1 - Oko Airstrip



Photo 2 – Tractor Trail to Baramalli Creek

Photo 3 – Evening Seminars at Mike Vieira’s Camp at Oko



Photo 4 – Mercury Retort Demonstration at Oko

Photo 5 – Construction of a Diversion Dam by Manual Methods at Godtite's



Photo 6 – Restraining Sluicelox Tailings with a Dam of Fronds at Gomes'

Photo 7 – Baramalli Creek Bypass Ditch and Vieira's Pump Intake



Photo 8 – Cross Ribs on Katchia's Sluiceway

Photo 9 – The New (left) and Old (right) Sluiceboxes at Fazal Sheriff's



Photo 10 – Mr. Sherrif Standing Beside New Operating Sluicebox

Photo 11 – Close-up of Expanded Metal and One-Inch Angle Iron Riffles at Sheriff's



Photo 12 – Jet Mining at Sheriff's Pit Near the Oko Airstrip

Photo 13 – Andrew DeAbreu Jetting at Peter Thompson’s Pit



Photo 14 – Operating Suction Hose at Peter Thompson’s

Photo 15 - Ainton Vieira Beside Peter Thompson's Old Sluicebox



Photo 16 – Swollen and Hardened Unbacked Nomad Matting With No Expanded Metal Riffles



Photo 17 – Randy Clarkson Locating Lost Radiotracers in Tailings with a Scintillometer



Photo 18 – Upgrading Sluicebox Concentrates with Small Sluicebox

---

GENCAPD Mining Project • Small Scale Demonstration Project • Puruni

Photo 19 – Construction of Peter Thompson's New Sluicebox



Photo 20 – GGMC Mines Officer Beside Peter Thompson's New Sluicebox

Photo 21 – Yellow Flagging Displays Recovered Radiotracers in Peter Thompson’s New Sluicebox

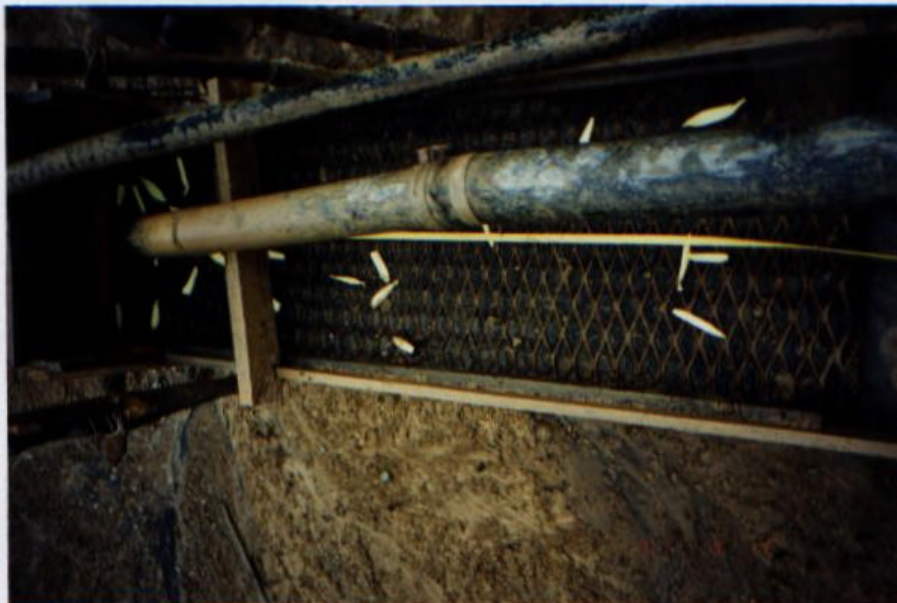


Photo 22 – Yellow Flagging Displays Recovered Radiotracers in Lower Section